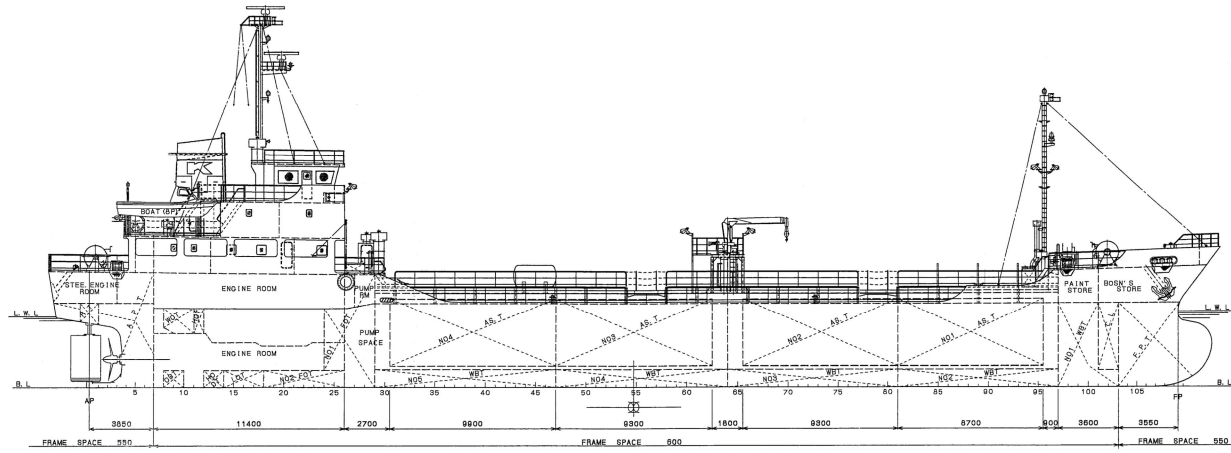


PRINCIPAL DIMENSION'S

LENGTH	(O. A)	80' 98"
LENGTH	(P. P)	85' 00"
BREADTH	(M. LB)	12' 00"
DEPTH	(M. LB)	5' 00"
DRAFT		4' 436"
GROSS TONNAGE		10567
DEAD WEIGHT		1523.81 ^{MT}
TANK CAPACITY		1380.424 ^{M³}
MAIN ENGINE		1800 ^{HP}
SPEED	(TRIAL MAX)	13.617 ^{KNT}
SPEED	(SEA SERVICE)	11.80 ^{KNT}



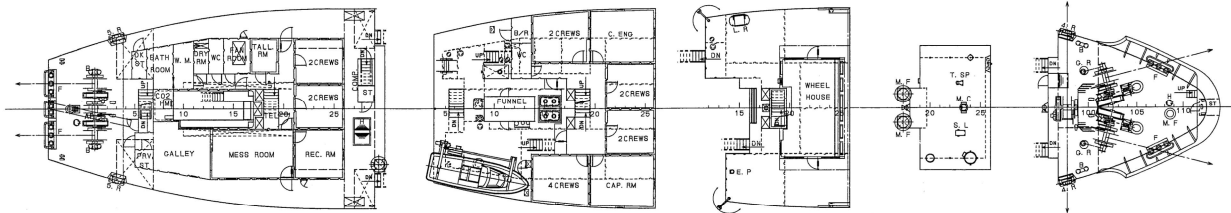
POOP DECK

BOAT DECK

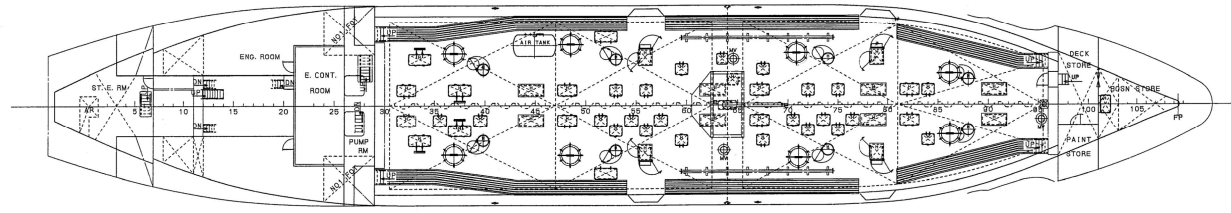
NAV BRID DECK

COMPASS DECK

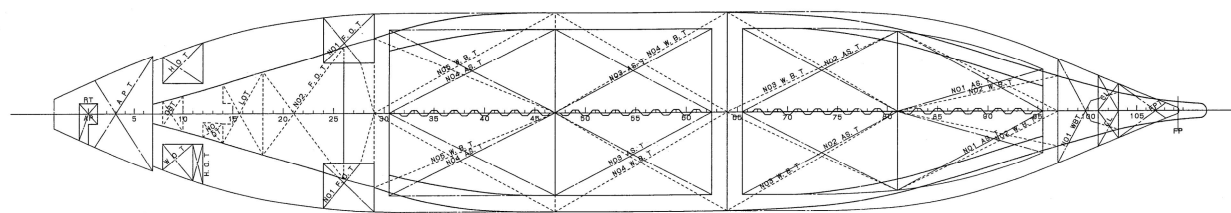
FOLE DECK



UPPER DECK



BOTTOM PLAN



SHIPS CLASSIFICATION MALAYSIA
FOR INFORMATION ONLY
 Ref. No. : 20/SCM/KUL/T113
 SCM HQ: 13 MAC 2020

TITLE:		GENERAL ARRANGEMENT			
SHIP:		ASPHALT ABADI IMO: 9163099			
OWNER	LG MARITIME SDN. BHD	CLASS	SCM		
BUILDER	SASAKI SHIPBUILDING CO., LTD.	FULL NO.	SNO 610		
DRAWN	CHECKED	APPROVED	DRAWING NUMBER	SCALE	DWG. SIZE
-	-	-	H-41	N15	REV. 0